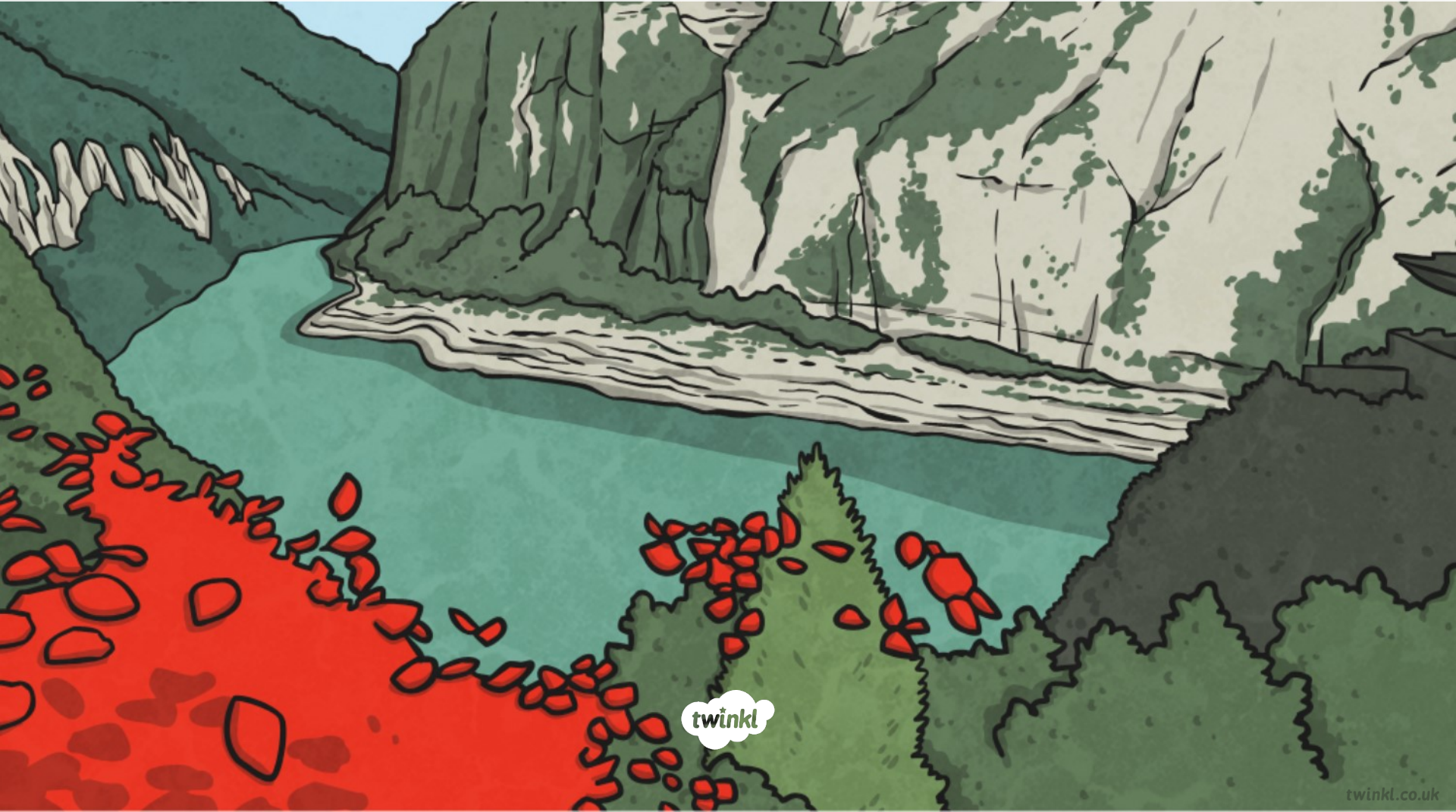


# Modal Verbs



**Modal verbs** are auxiliary (supporting) verbs which cannot usually work alone.

They are used with a main verb.

These are ~~en~~ modal verbs:

might

will

should

may

would

can

could

must

shall

ought to

**Modal verbs** make questions by inversion.

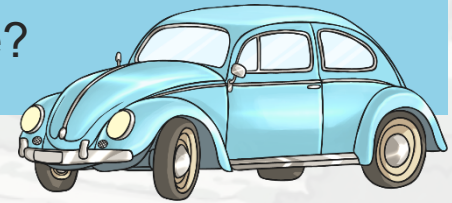
She **can** go out.

**Can** she go out?



We **could** drive there.

**Could** we drive there?



Children **should** eat fruit.

**Should** children eat fruit?



**Modal verbs** can be used to show how possible something is, or how likely it is to happen/have happened.

For example:

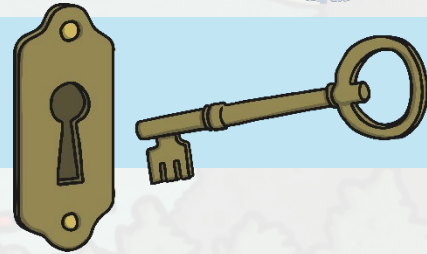
He's very late. He **could have missed** the train.



It's snowing so it **must be** very cold outside.



They **will lock** the windows when they go out.



Can you spot the **Modal verbs** used to show **possibility** in these sentences?

Mum **might** take us swimming after school.



You **could** eat a banana instead of those sweets.



“Hurry up! We **will** be late!” said Dad

Hurry up!

We **can** go the other way it's quicker.



You **ought** to go to bed earlier.



Underline the **modal verbs** in these sentences.

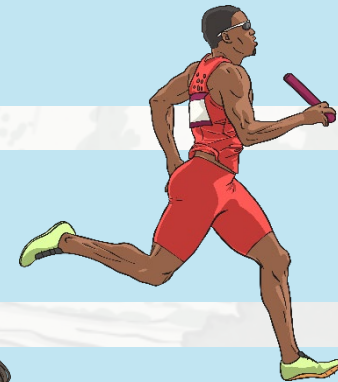
You must be hot in that thick coat.



If it's dry, shall we play outside?



He's so fast, he should win the race.



I'm fed up with my long hair. I might have it cut.



Which other modal verbs could you have used?

**Modal verbs** can also be used to show:

### advice or obligation

Pupils **must** wear a uniform.

You **should** not smoke.



### habits

I **will** often have cereal for my breakfast.

We **shall** always enjoy a walk in the park.



### permission

May I leave a few minutes early?

Could we go to the post box on the way?

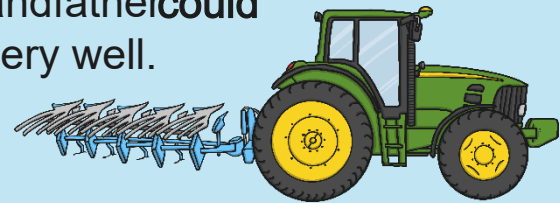
Please can we have an ice cream?

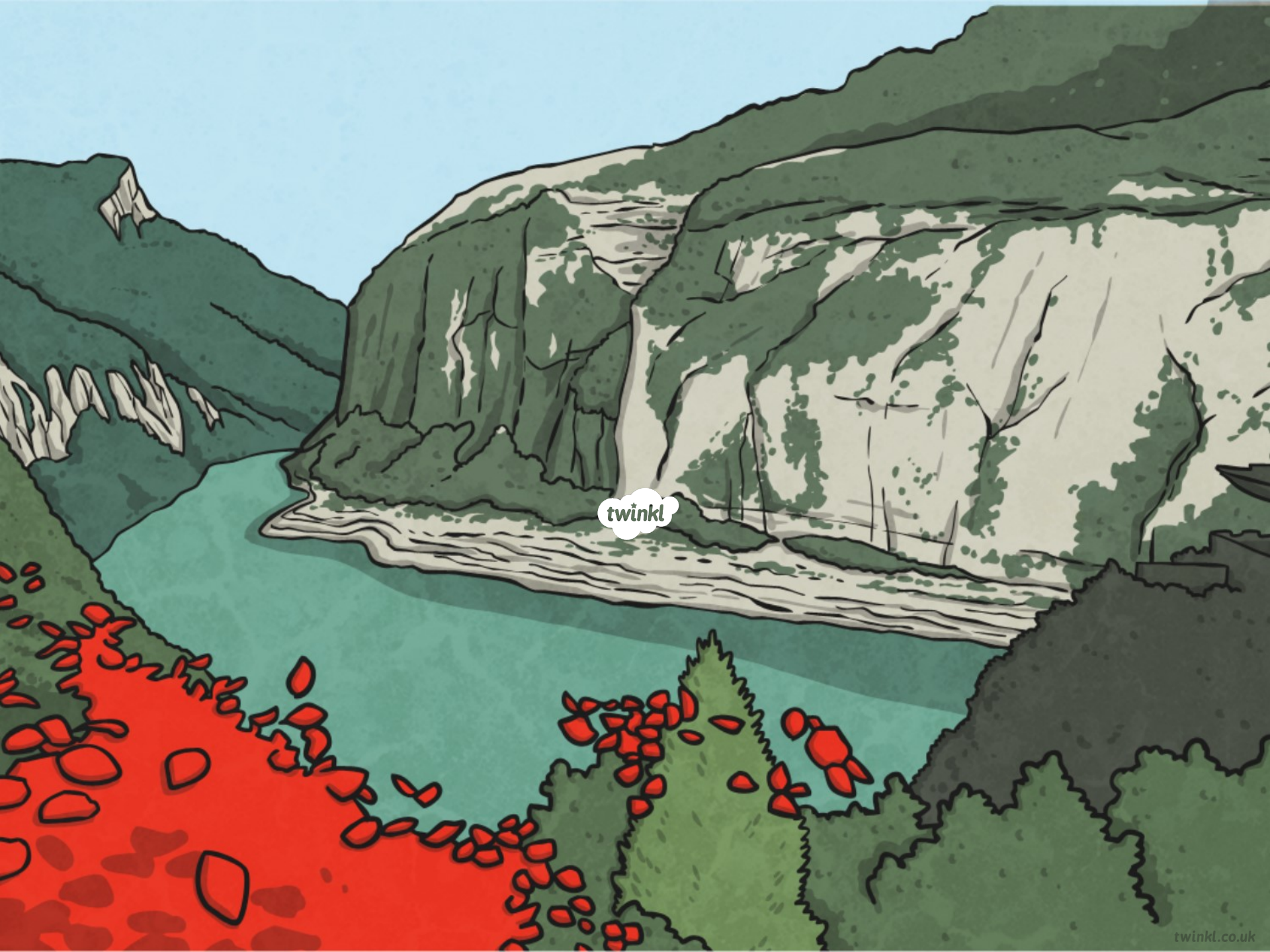


### ability

I **can** drive a tractor.

My grandfather **could** draw very well.





twinkl