

Wider curriculum - Science

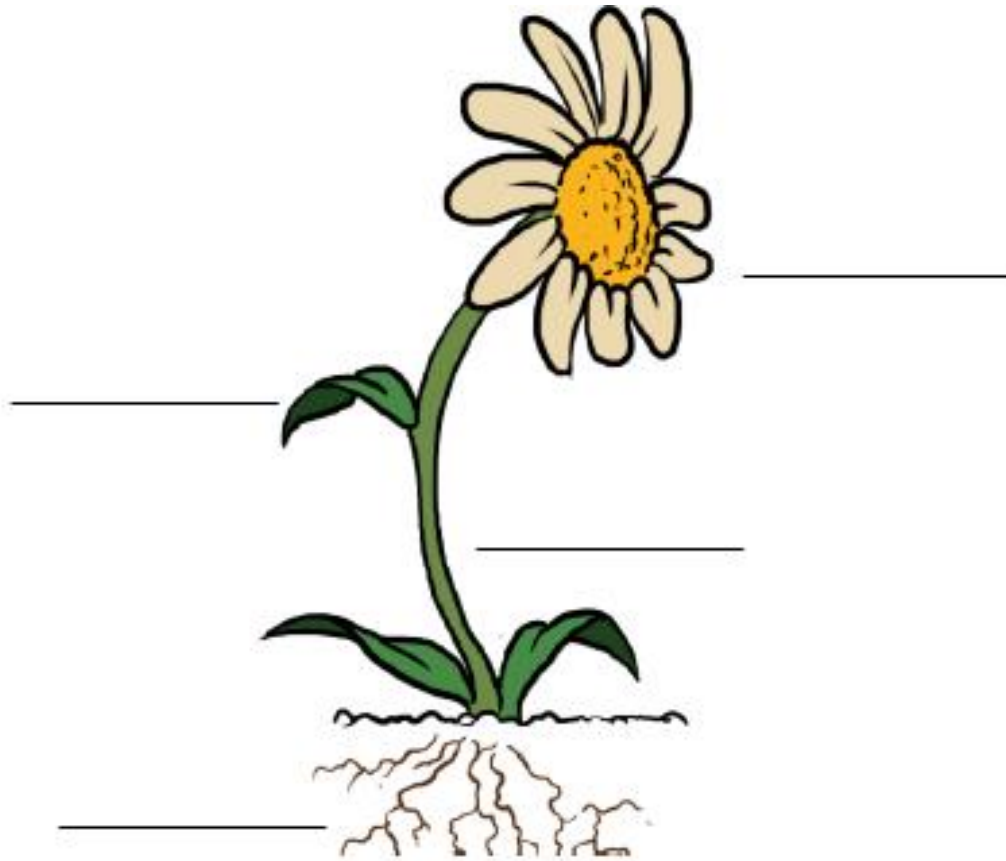
<https://www.bbc.co.uk/bitesize/topics/zy66fg8/articles/zcjmp39>

<https://www.youtube.com/watch?v=p3St51F4kE8>

https://www.youtube.com/watch?time_continue=17&v=bLhTgTwbYMI&feature=emb_logo

Task 1:

Draw yourself a beautiful plant and label the main parts.

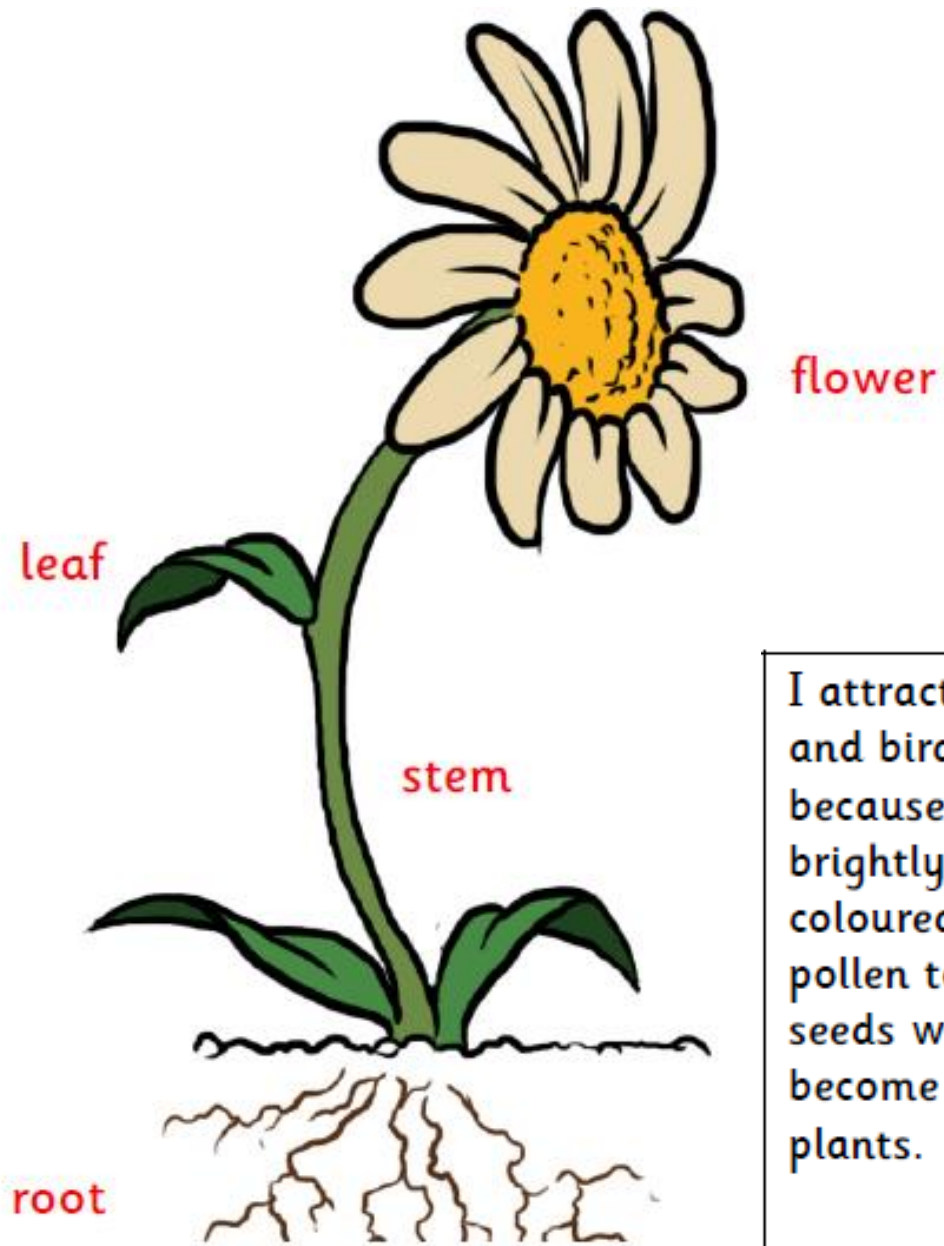


Task 2:

What are the functions of these parts of a plant?

The flower	The stem	The leaves	The roots

If you can't view the links, use the Plants pdf available on our website.



Task 3:
Match the function with the part of the plant!

<p>I attract insects and birds because I am so brightly coloured. I use pollen to make seeds which will become new plants.</p> <p>_____</p>	<p>By using sunlight and carbon dioxide from the air, I can make food for the plant on which I live.</p> <p>_____</p>	<p>These absorb water and nutrients from the soil. They are usually covered in tiny hairs and are below the level of the ground.</p> <p>_____</p>	<p>I carry water and nutrients from the roots to the leaves whilst holding up the plant and supporting new growth of leaves and flowers.</p> <p>_____</p>
---	---	---	---

Science experiment - Task 4

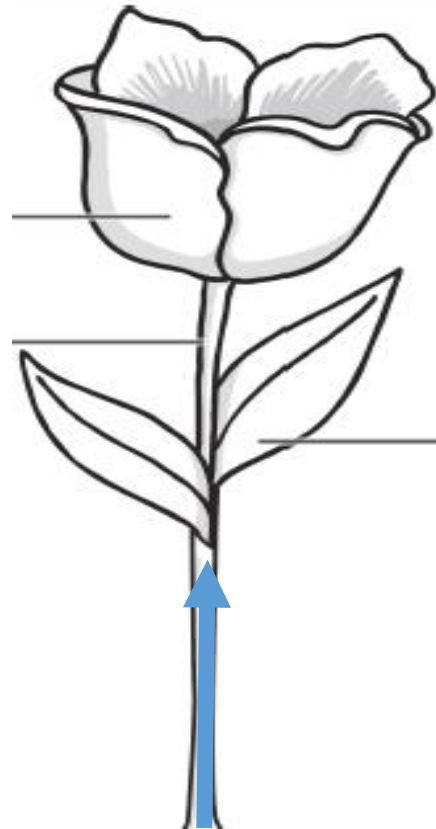
Can you remember how water travels up the plant?

This experiment should prove to you that the water moves up the plant from the roots.



Equipment:

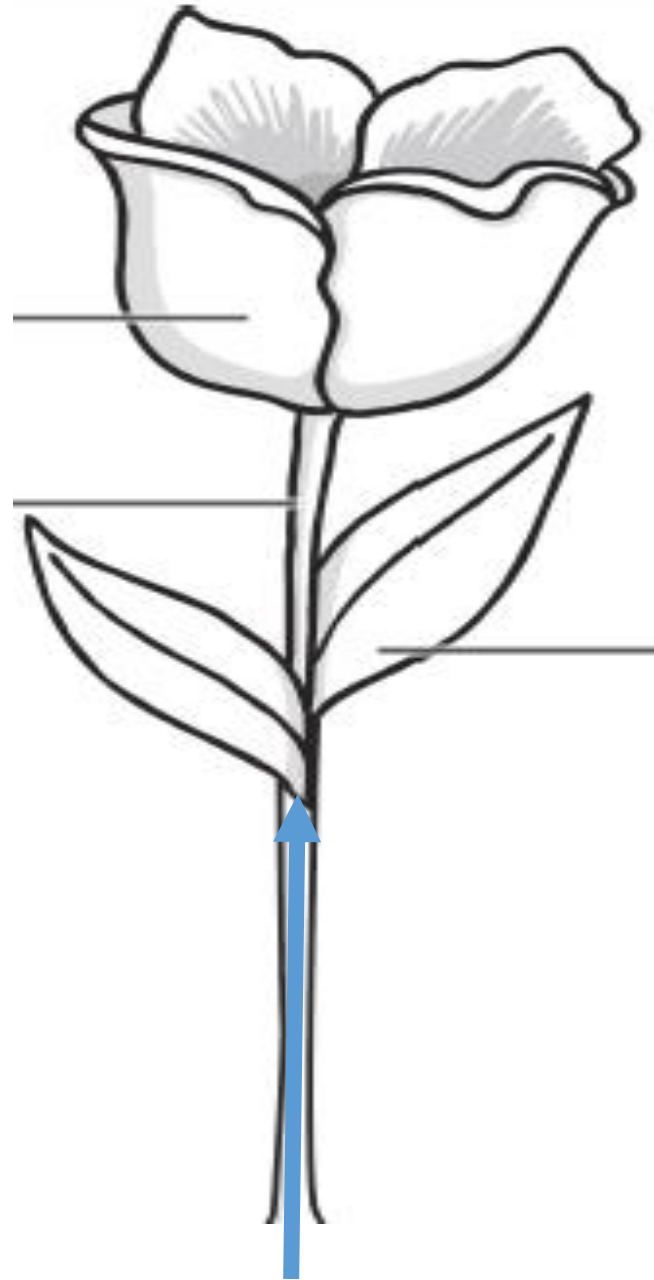
- Celery/lettuce/carnation flower
- Food colouring
- Plastic/clear cups
- Water
- scissors



Method:

- Fill each cup with water half way.
- Add 3 drops of food colouring into each of the cups. Each cup should be a different colour.
- Carefully cut the end of each of the flower's stem.
- Place each stem in a different coloured water cup.
- Wait one hour and observe your flowers' petals.
- Wait one day and observe your flowers' petals





How does it work?

Xylem

The Xylem of the flower works like an lift!

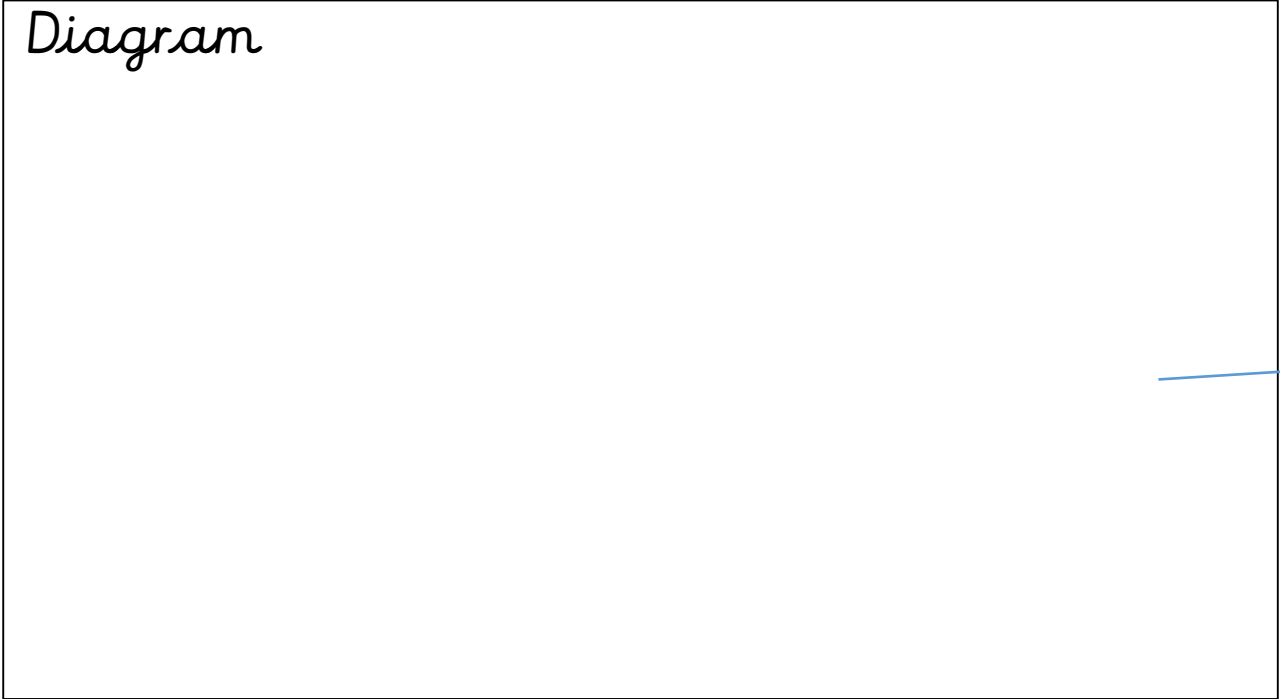
They look like little tubes running up the stem.

They bring the water from the cup all the way up the plant's stem and into the plant's petals and leaves.

When it brings the dyed water up, it ends up dying the plant's petals.

The Xylem is what allows the plant to get water from the roots all the way to the petals.

Diagram

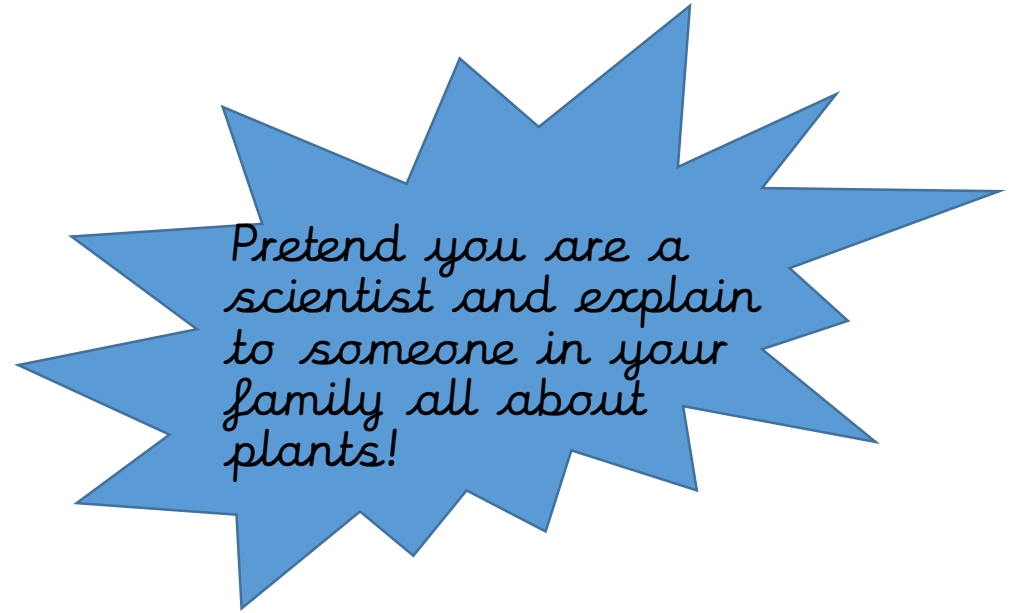


Task 5:
The write-up

Draw a diagram of your experiment and label it clearly!



Explain what you did and how your experiment works!



Wider curriculum - Art



Task 6:
Drawing
wildflowers



How to draw wildflowers



Step 1

Find your flower or google a picture.

Observe it's size, shape, and curves.



Step 2

Add the base of the flowers. This is the green area that the flowers are branching out of.



Step 3

Begin adding details.

Notice that pieces extending toward you look shorter.



Step 4

Add the blooms/flowers.

They are shapes with bends and curves.



Step 5

Lastly, add smaller marks with a smaller pen tip.

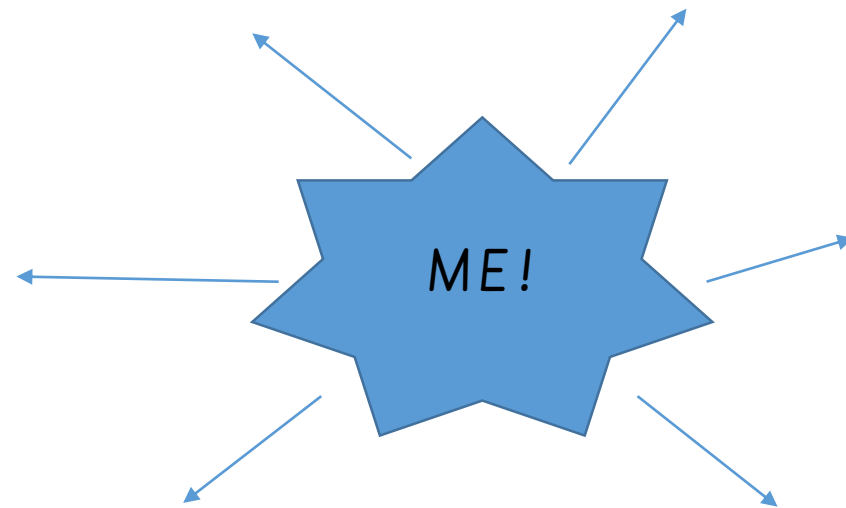
Wider curriculum PHSE

Recognise my worth and identify positive things about myself and my achievements.



What are you proud of yourself for?

- Sportsmanship
- Friendship
- School
- Hobbies
- Talents



Create a spider diagram of the things you are most proud of!



Wider curriculum PHSE

This is your medal for being great!

Print off the medal if you can or design your own.

In your medal, draw the thing you are most proud of yourself for.