

Monday 16th November 2020

Hard 'c'



Soft 'c'




Certain Calendar Complete Circle Continue Centre Century Caught Consider

Tuesday 17th November 2020

Shape Poems

Can you and a partner guess what these poems are describing?

Hint: You can use the words and the **shape** of the words to help you.



They glide across
the golden grass
gathering goblins and
gathering grasshoppers.
They giggle as they
glide above
the ground.

Shape Poems

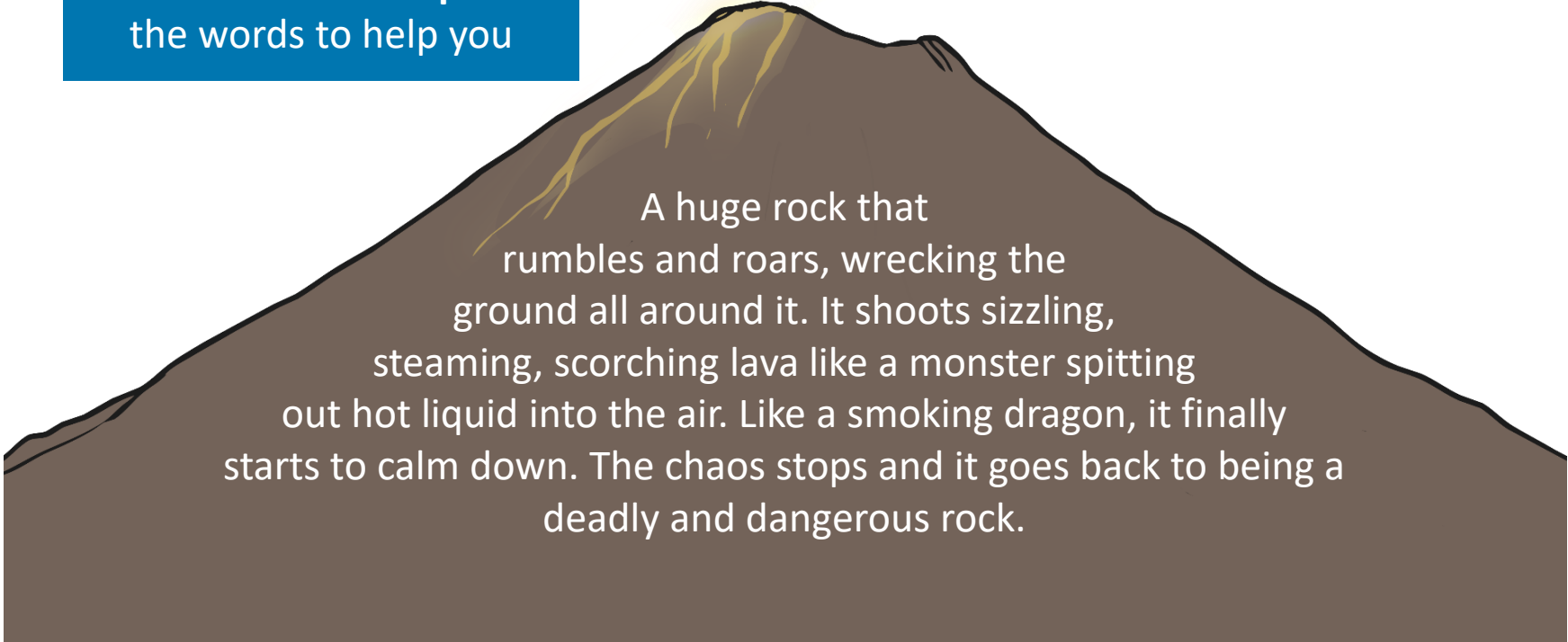
Can you and a partner guess what these poems are describing?



Shape Poems

Can you and a partner guess what these poems are describing?

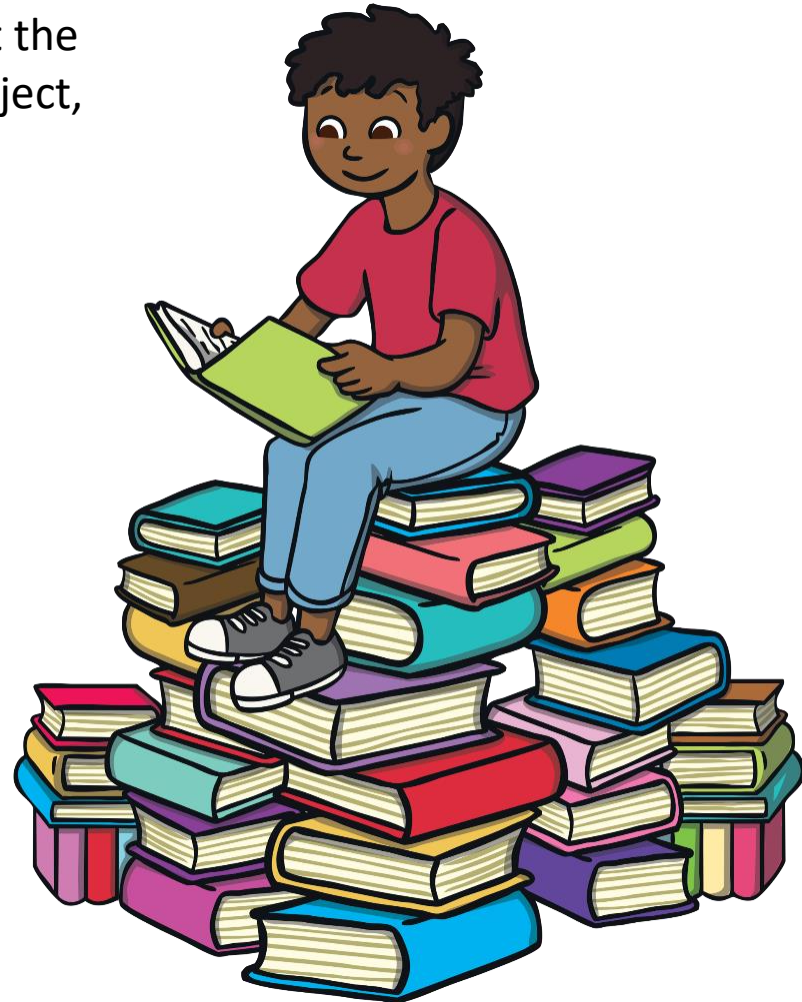
Hint: You can use the words and the **shape** of the words to help you



A huge rock that
rumbles and roars, wrecking the
ground all around it. It shoots sizzling,
steaming, scorching lava like a monster spitting
out hot liquid into the air. Like a smoking dragon, it finally
starts to calm down. The chaos stops and it goes back to being a
deadly and dangerous rock.

What is a Shape Poem?

- A shape poem is a poem that describes an object, person or animal.
- The special thing about a shape poem is that the words of the poem form the shape of the object, person or animal being described.
- Shape poems don't have to rhyme!
- Shape poems can use full stops and capital letters like sentences.
- Shape poems often use alliteration or similes.



Wednesday 18th November 2020

Onomatopoeia

twinkl

Onomatopoeia

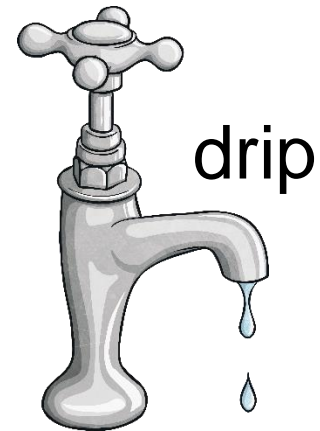
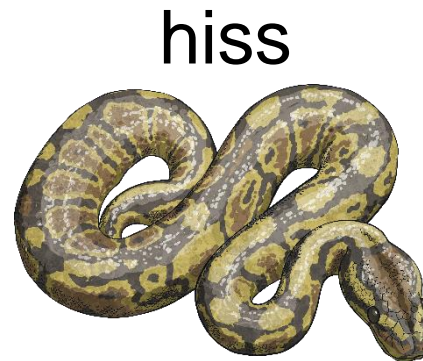
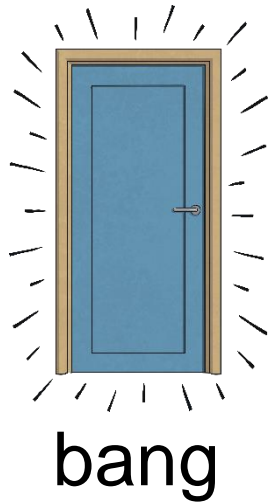
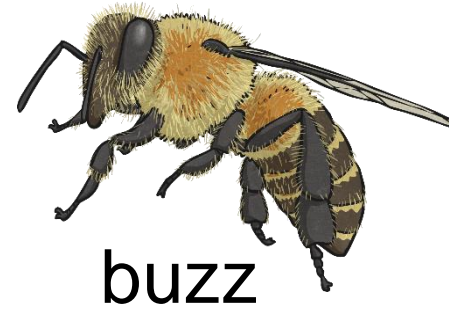
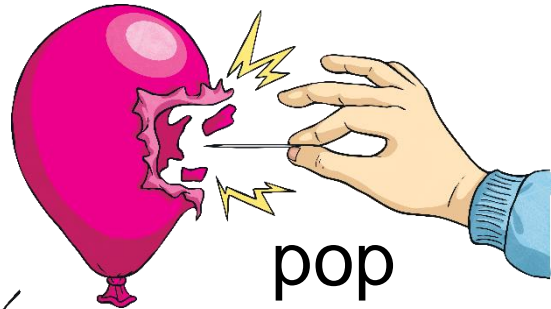
The word **onomatopoeia** comes from two Greek words. It literally translates as 'name I make'.

Does this give you a clue as to what onomatopoeia means?

Onomatopoeia are words that **imitate** or copy the sound they describe.

Examples of Onomatopoeia

Say these examples out loud.
Can you hear how they copy the sound they are describing?



Common Onomatopoeia

Onomatopoeic words are often seen when they are describing the noises made by:

drizzle

water

splash

drip

giggle

voices

growl

chatter

cheep

animals

oink

miaow

crash

collision

clink

s

thud

swoosh

air

swish

gasp

Match the Onomatopoeia

Match these onomatopoeic words to the thing they are most likely to describe.

[Click to Sort Answers](#)

water

animals

voices

purr

splish

baa

grumble

babble

neigh

dribble

Do you agree?

Are there any words that could have gone in more than one category?

Identifying Onomatopoeia

Can you spot the onomatopoeic words in these sentences?
Click each phrase to reveal.

The train **spluttered** to a halt.

The **ribbits** of the frog could be heard from the pond.

Birds **chirped** merrily in the trees.

A breeze **wafted** by as we sat by the **crashing** waves.

Rebecca **gasp**ed with horror.

We heard the bells **jingle** on the roof on Christmas Eve.

Why Use It?

Using onomatopoeia can add meaning or dramatic effect to your writing. For example, think about the different image you get in your head for the following sentences:

The car hit the wall with a **bump**.

The car hit the wall with a **crunch**.

The car hit the wall with a **bang**.

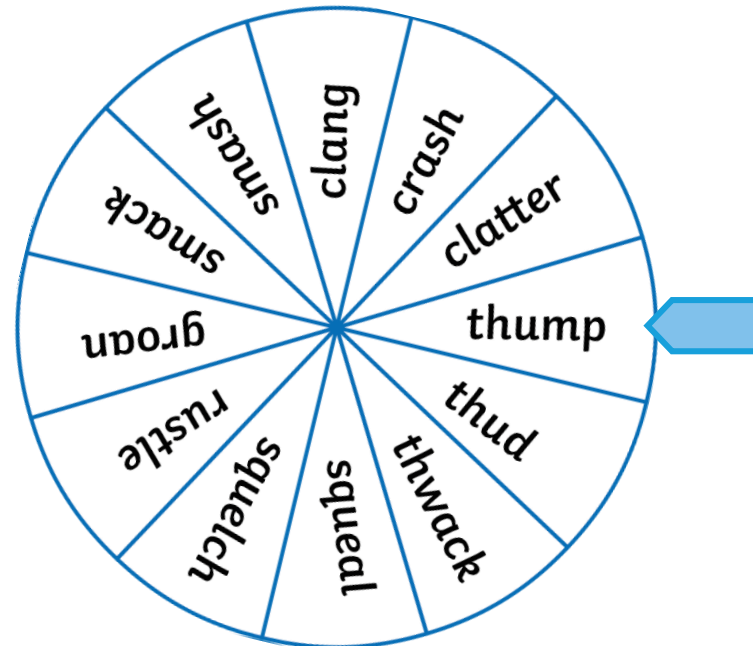
The car hit the wall with a **whack**.

The same action happens every time but the use of onomatopoeia makes some sentences sound like the crash was more severe. You can almost hear the sound made by the car in each example.

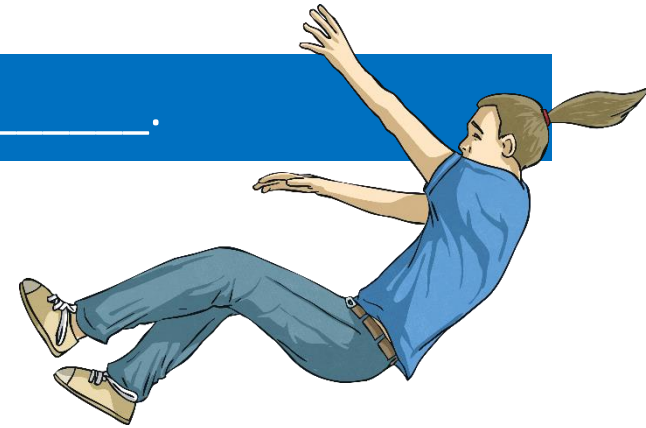
Using Onomatopoeia for Effect

Let's explore the different effects that onomatopoeic words have on the meaning of this sentence:

I fell to the floor with a _____.



Spin



Have a Go!

How could you use an onomatopoeic word to complete this sentence?
Write as many different ways as possible in two minutes.

The farmyard was alive with the sound of _____.



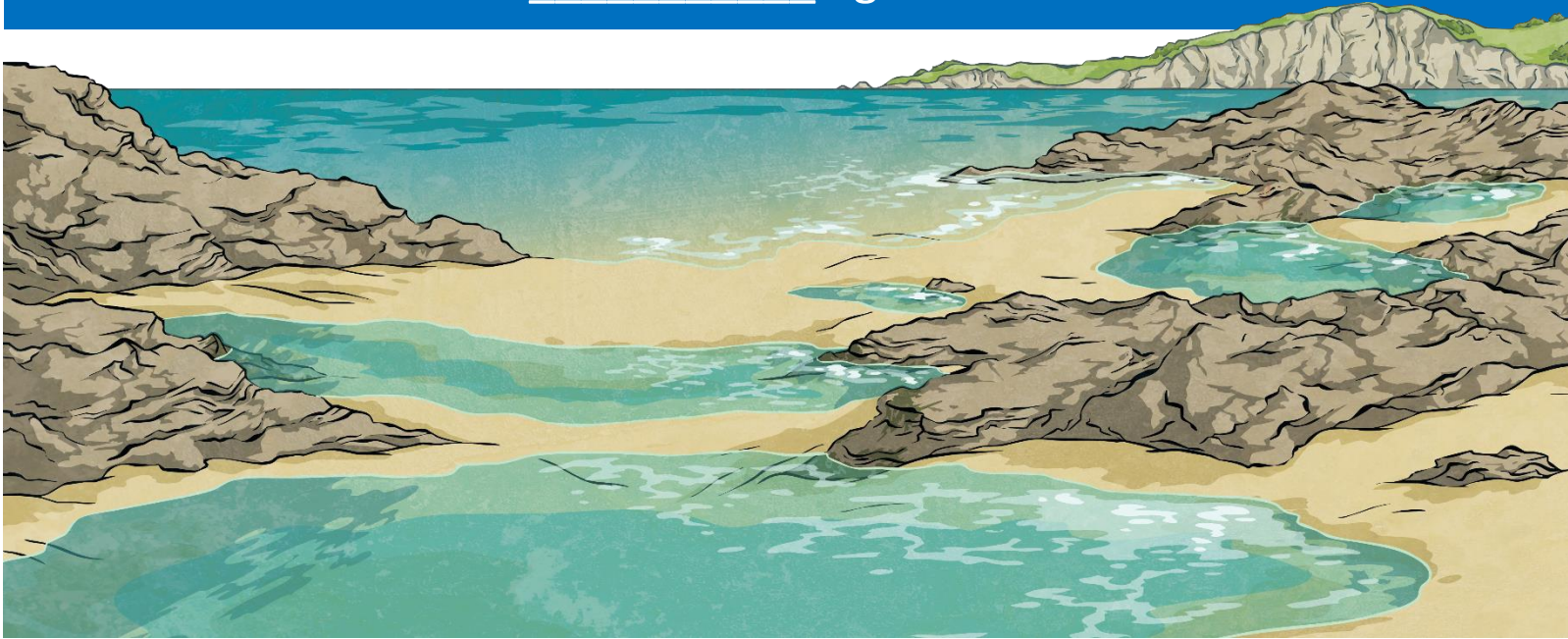
Start

End

Have a Go!

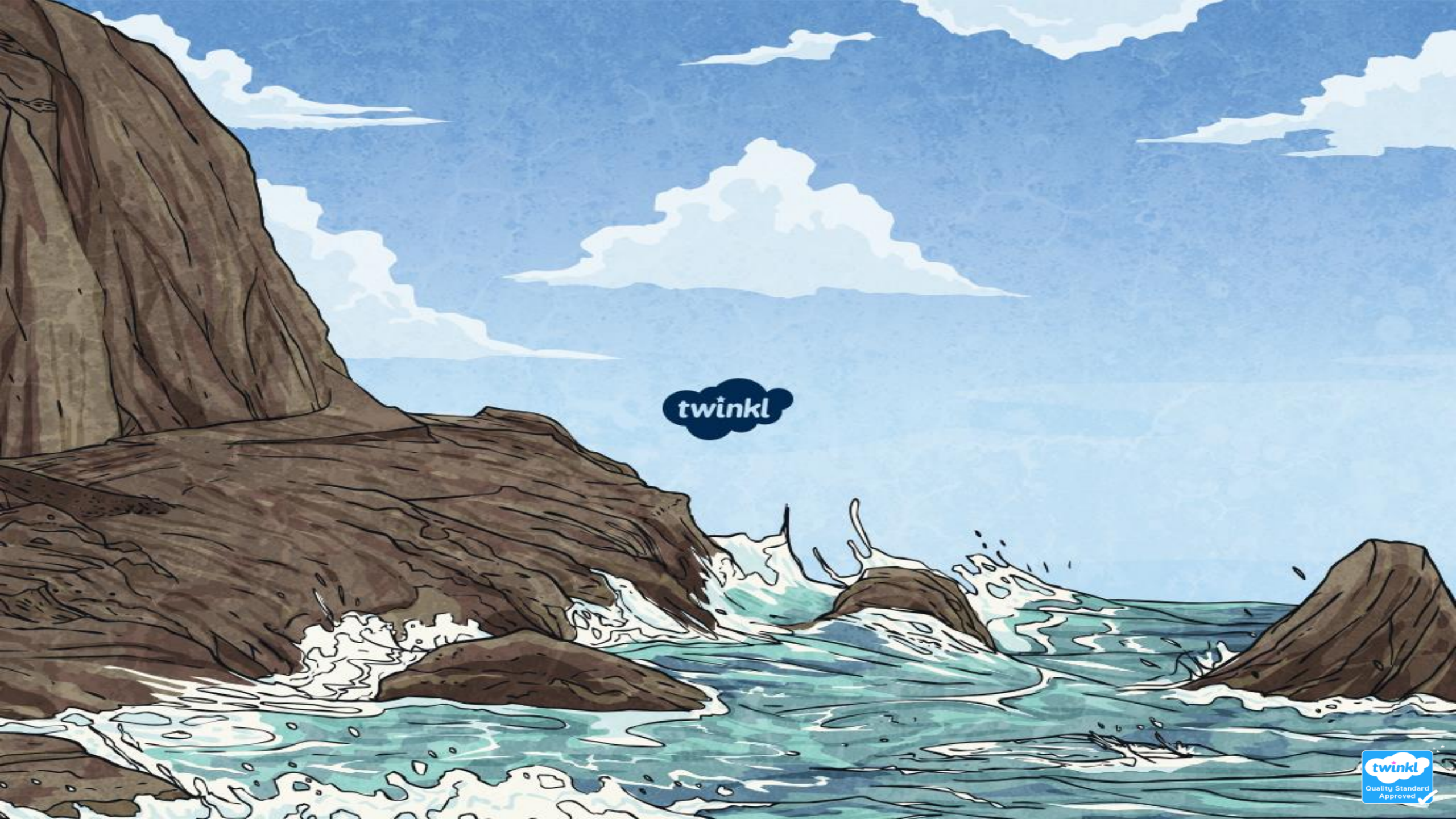
How could you use an onomatopoeic word to complete this sentence?
Write as many different ways as possible in two minutes.

The waves _____ against the shoreline.



Start

End



twinkl

Thursday 19th November 2020

What is an Adverb?

An adverb is something that tells you where, why or how something is done. For example:



Camilla crossed the road **safely**.



Saffie's horse **bravely** jumped over the hurdle.

The Moroccan man rode his camel **everywhere**.



Many adverbs end in -ly but **not all of them**. Similarly, not all words which end in -ly are adverbs.

Sort the Adverbs

Keeping in mind that 'an adverb is something that tells you where, why or how something is done', sort the following words into the correct boxes:

Adverbs	Not Adverbs
angrily	lonely
cruelly	ugly
never	friendly
very	the
well	bully

angrily

lonely

ugly

cruelly

never

very

well

friendly

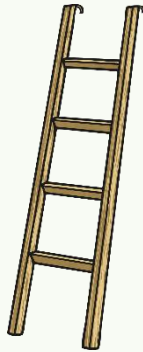
the

bully

Spot the Adverbs

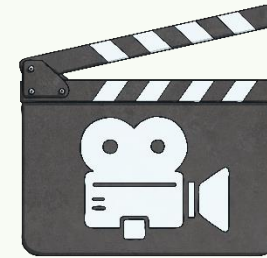
Read the sentences below and spot the adverb that says how, why or when the verb was done.

Did you notice that not all of the adverbs ended in -ly?



Make sure you climb the ladder **safely**.

Let's go to the cinema **today**.



Usually my parcels arrive on time.

She looked at her friend **cautiously**.



Add an Adverb

Read the sentences below and add an adverb to say how, why or where the action in the sentence was being done.

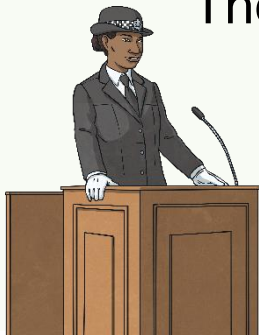
The fox ran _____ beneath the bushes.



Milly _____ did her work.



The police officer _____ gave evidence in court.



Keisha said thank you _____.



Add an Adverb

The great thing about using adverbs is that there are lots of different ways to describe actions to make your writing interesting.

Here are some suggestions:

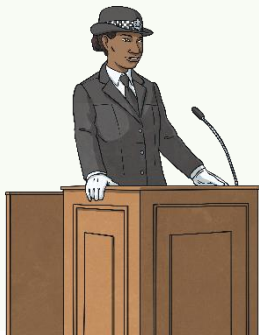
The fox ran timidly beneath the bushes.



Milly carefully did her work.



The police officer confidently gave evidence in court.



Keisha said thank you reluctantly.

Which adverbs did you choose? Does selecting different adverbs change the whole meaning of a sentence?



Spin the Wheel

Spin the wheel to select an **adverb**.



Spin the wheel to choose an **adverb**. On your whiteboards, write your own sentence about **something that might happen at school** including that **adverb**.

Spin

It's Your Turn

Look at the pictures below. Write a sentence to go with each picture that contains an adverb.



Share your sentences with the class.

Adverbs Quick Quiz

Take a quiz to see if you are an expert!

Which word is the adverb in this sentence?



It is important to apply sun cream regularly on sunny days.

important

regularly

apply

Adverbs Quick Quiz

Take a quiz to see if you are an expert!

Which word is the adverb in this sentence?



Brown bears are usually found in Canadian forests.

found

brown

usually

Adverbs Quick Quiz

Take a quiz to see if you are an expert!

Which word is the adverb in this sentence?



The timid mouse poked his nose out from behind the cupboard inquisitively.

inquisitively

out

behind

Friday 20th November 2020

Time to write your poem!

Alliteration.	
Simile.	
Adjectives.	
Onomatopoeia.	
Verbs and adverbs.	
Easy to read.	
Clear to see the subject.	

Try to include all the key features.