

Monday 2nd November 2020

This week, we are going to look at adding a particular prefix to lots of different root words.

Can you remember
what a prefix is?



A **prefix** is a letter or group of letters added at the beginning of a root word that creates a new word with a different meaning.

*We are going to concentrate on adding
the prefix...*

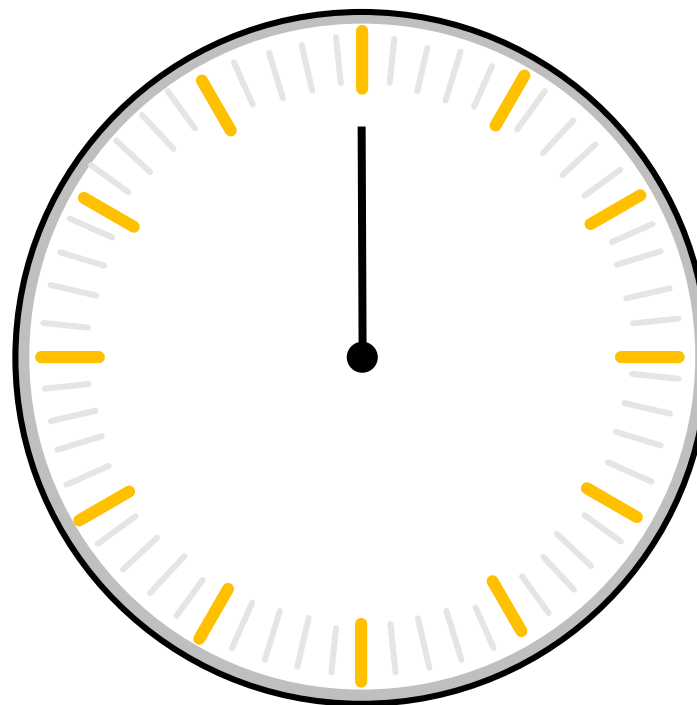
dis-

Working with a partner, write down as many dis- prefix words as you can think of in the next five minutes.

What sort of words do we usually add dis- to?



How does adding dis- affect the meaning of a root word?



Start

How many words did you think of?

The *dis-* prefix is usually added to verb root words to give a negative meaning.



'Dis-' means opposite or not.

You are now going to be prefix detectives. Has the correct negative prefix been used at the beginning of these root words?

disallow

*dis- is the correct
prefix here. ✓*



Could you use 'disallow' in a complex sentence?

You are now going to be prefix detectives. Has the correct negative prefix been used at the beginning of these root words?

displeasant



dis- isn't the correct prefix here. ~~X~~

Which prefix should have been used?

unpleasant

You are now going to be prefix detectives. Has the correct negative prefix been used at the beginning of these root words?

disobey

*dis- is the correct
prefix here. ✓*



Could you use 'disobey' in a complex sentence?

You are now going to be prefix detectives. Has the correct negative prefix been used at the beginning of these root words?

disbehave



dis- isn't the correct prefix here. ~~X~~

Which prefix should have been used?

misbehave

You are now going to be prefix detectives. Has the correct negative prefix been used at the beginning of these root words?

disapprove

dis- is the correct prefix here. ✓



Could you use 'disapprove' in a complex sentence?

You are now going to be prefix detectives. Has the correct negative prefix been used at the beginning of these root words?

disresponsible



*dis- isn't the correct
prefix here.* ~~X~~

Which prefix should have been used?

irresponsible

Here are your spelling words for this week.

Week 5
Creating negative
meaning using
prefix dis-

dislike

disobey

discolour

discover

disappear

dishonest

disallow

disbelieve

disapprove

discontinue

[twinkl.co.uk](https://www.twinkl.co.uk)

*Remember, they
all contain the
prefix dis- to
give them an
opposite
meaning.*



Tuesday 3rd November 2020

Pooh sticks... what are they?

Pooh sticks is a game from the book Winnie the Pooh.

1. It is played by two people standing on a bridge overlooking a river.
2. Each player drops a stick upstream at the same time.
3. The person whose stick reaches downstream first is the winner!



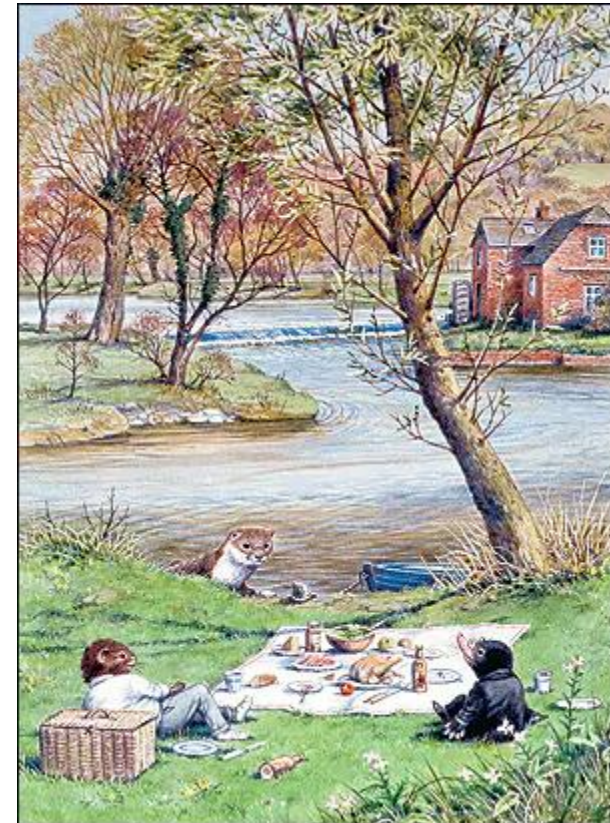
<https://www.youtube.com/watch?v=alewi4qMGI>

Imagine you're the stick, but you float all the way down the river seeing new and interesting people and places.

What can you see?

What can you smell?

What can you hear?



Who might you meet?

- Think about the animals we have been introduced to when reading *The Wind in the Willows*.
- Which animals live in or around the riverbank?

Your Task:

Narrative Writing (Senses)

Look at the image of the river below. Imagine you have travelled downstream as a ~~paahstick!~~ Write:



1. 3 sentences describing what you can see.



2. 3 sentences describing what you can hear.

3. 3 sentences describing what you can smell.



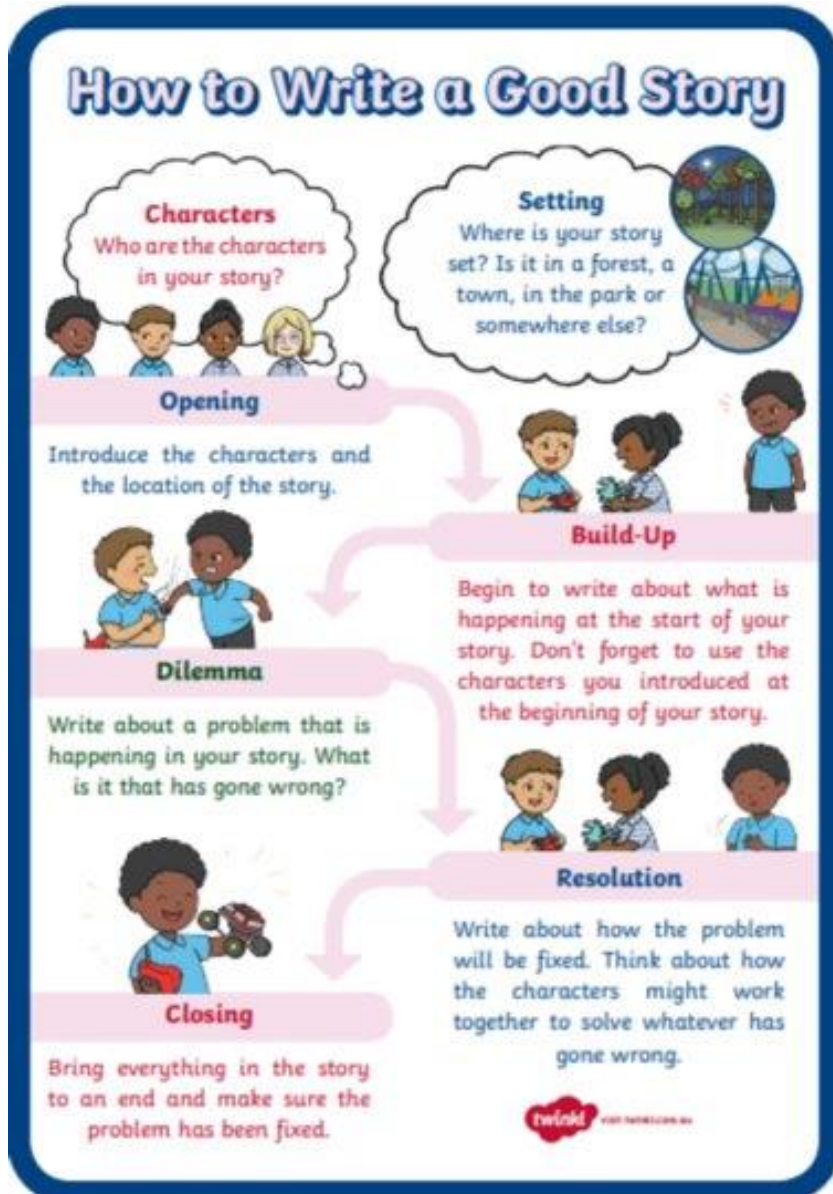
ALL of your sentences must include an expanded noun phrase.



Challenge:

Can you write sentences describing what you may have touched?
Start these sentences with a subordinating conjunction.

Wednesday 4th November 2020



Plan your narrative.

- Your narrative **MUST** be as if you are a poohstick travelling down the river.
- Who will you meet?
- What problem will you solve?
- Choose three or four Year 3 spelling words you will include.

Thursday 5th November 2020

- Time to write your own narrative!
- Can you include everything from this checklist?

- When you have finished writing, colour code your work using your checklist.

Checklist	
Fronted adverbials (time, <u>place</u> and manner).	
Alliteration	
Similes	
Expanded noun phrases	
Direct Speech	
Time conjunctions	
Capital letters	

Friday 5th November 2020

- Respond to all green pen marking.
- Don't have any? Choose one paragraph and improve it by adding:
 - Adverbs
 - Expanded noun phrases
 - Speech
 - Time conjunctions